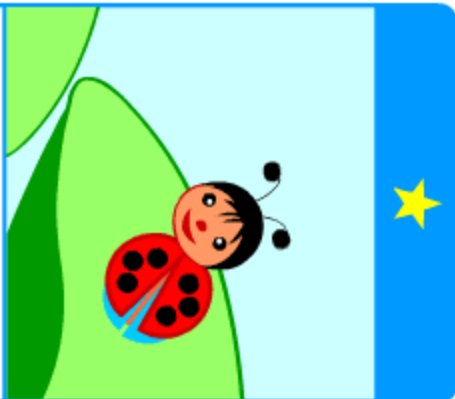
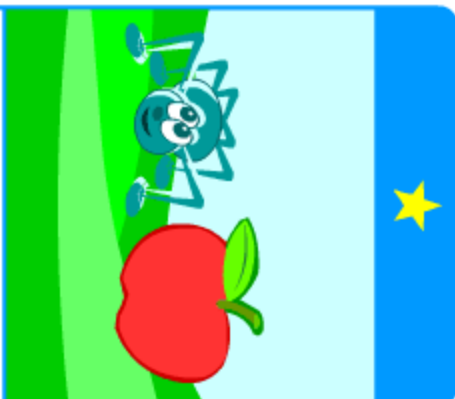


Is there a ladybird  
on the leaf?



Is there a spider  
next to the apple?



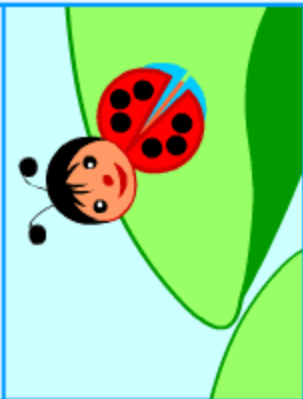
Is there a squirrel  
on the log?



Is there a frog  
behind the apple?

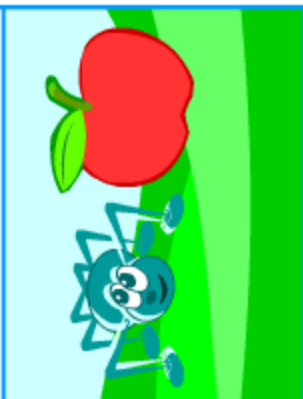


Is there a ladybird  
on the leaf?



Yes, there is.

Is there a spider  
next to the apple?



Yes, there is.

Is there a squirrel  
on the log?



Yes, there is.

Is there a frog  
behind the apple?



Yes, there is.



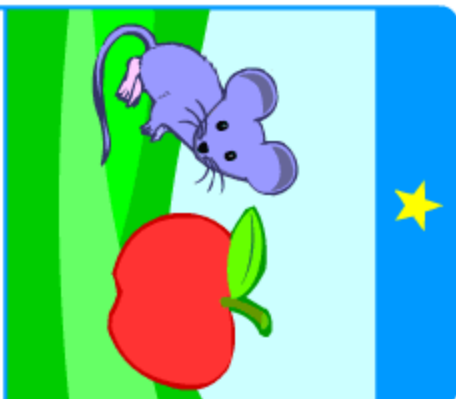
Cut out the individual cards along dashed lines,  
fold them and glue.

----- CUT OUT  
----- FOLD

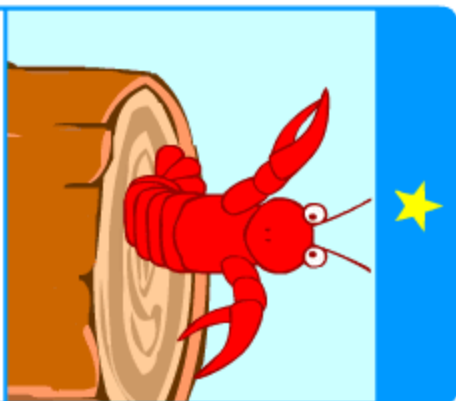
Is there a ladybird  
on the leaf?



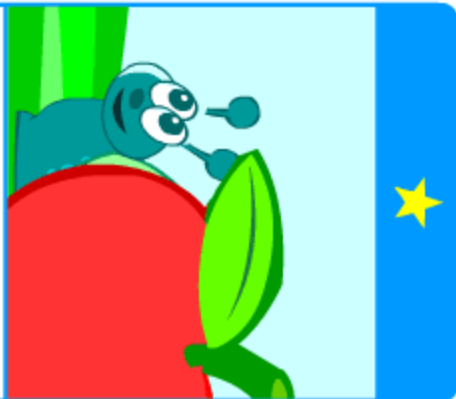
Is there a spider  
next to the apple?



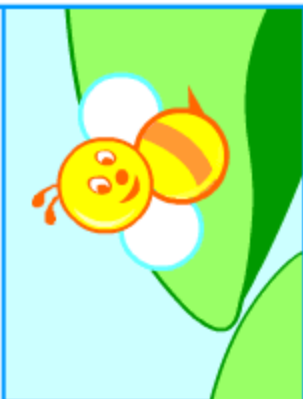
Is there a frog  
on the log?



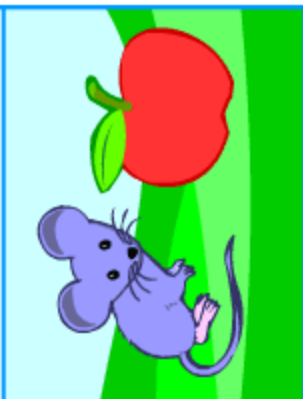
Is there a frog  
behind the apple?



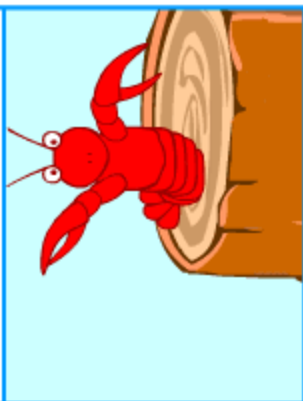
Is there a ladybird  
on the leaf?



Is there a spider  
next to the apple?



Is there a squirrel  
on the log?



Is there a frog  
behind the apple?



No, there isn't.

No, there isn't.

No, there isn't.

No, there isn't.



Cut out the individual cards along dashed lines,  
fold them and glue.

----- CUT OUT  
----- FOLD

Are there lobsters  
in the basket?

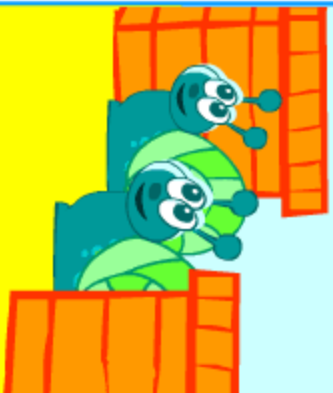


Are there lobsters  
in the basket?



Yes, there are.

Are there snails  
between the boxes?

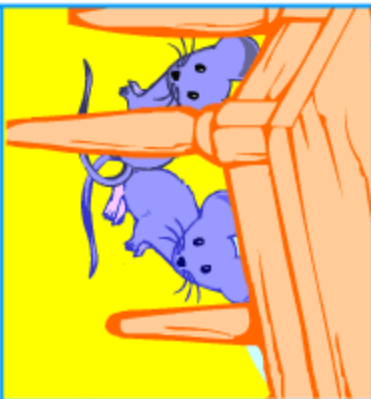


Are there snails  
between the boxes?

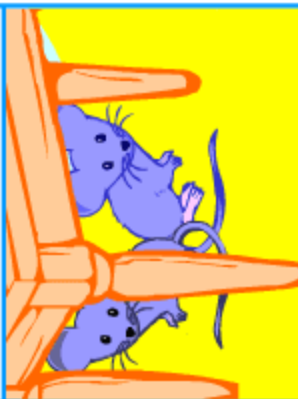


Yes, there are.

Are there mice  
under the table?



Are there mice  
under the table?



Yes, there are.

Are there bees  
in the cup?



Are there bees  
in the cup?



Yes, there are.

Cut out the individual cards along dashed lines,  
fold them and glue.

CUT OUT

FOLD

Are there lobsters  
in the basket?

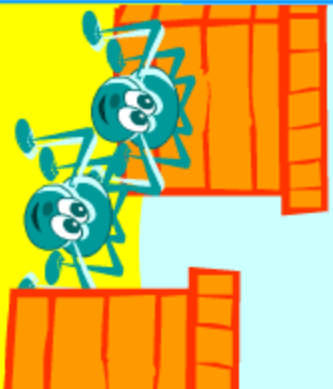


Are there lobsters  
in the basket?

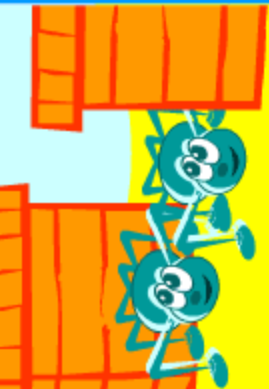


No, there aren't.

Are there snails  
between the boxes?



Are there snails  
between the boxes?



No, there aren't.

Are there mice  
under the table?



Are there mice  
under the table?



No, there aren't.

Are there bees  
in the cup?



Are there bees  
in the cup?



No, there aren't.



Cut out the individual cards along dashed lines,  
fold them and glue.

CUT OUT

FOLD

It's a frog!



There's an F in it.

There's an O in it.

There's a G in it.

What is it?

It's a bat!



There's a B in it.

There's a T in it.

There's an A in it.

What is it?

It's a fox!



There's an F in it.

There's an O in it.

There's an X in it.

What is it?

It's a hen!



There's an H in it.

There's an N in it.

There's an E in it.

What is it?



There's a G in it.

There's an O in it.

There's an F in it.

DOG

FROG

LOG

What is it?



There's an A in it.

There's a T in it.

There's a B in it.

BAT

CAT

HAT

What is it?



There's an X in it.

There's an O in it.

There's an S in it.

BOX

FOX

SOCKS

What is it?



There's an E in it.

There's an N in it.

There's an H in it.

BEN

HEN

PEN

What is it?

CUT OUT

FOLD

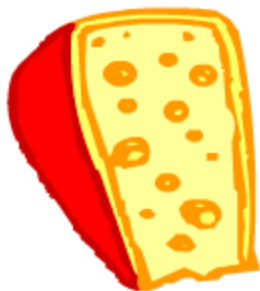
Cut out the individual cards along dashed lines,  
fold them and glue.

HOW MANY  
mice  
are there?



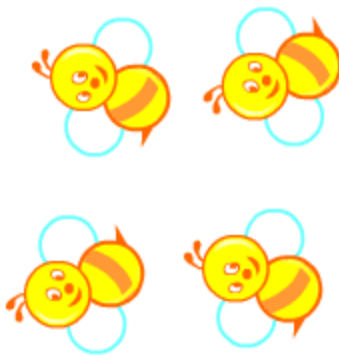
THE NUMBER

HOW MUCH  
cheese  
is there?



THE AMOUNT

HOW MANY  
bees  
are there?

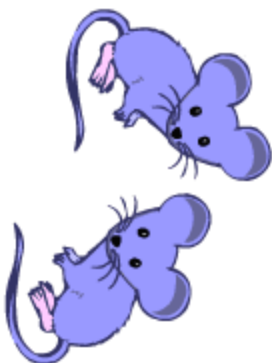


THE NUMBER

HOW MUCH  
honey  
is there?



THE AMOUNT



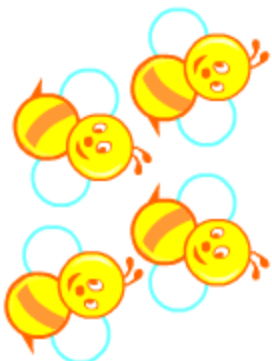
MICE

Look at the picture,  
then ask about  
the NUMBER.



CHEESE

Look at the picture,  
then ask about  
the AMOUNT.



BEEES

Look at the picture,  
then ask about  
the NUMBER.



HONEY

Look at the picture,  
then ask about  
the AMOUNT.

CUT OUT

FOLD

Cut out the individual cards along dashed lines,  
fold them and glue.