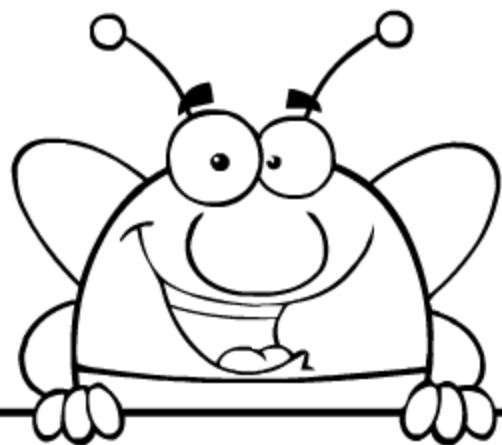
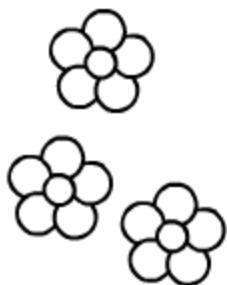
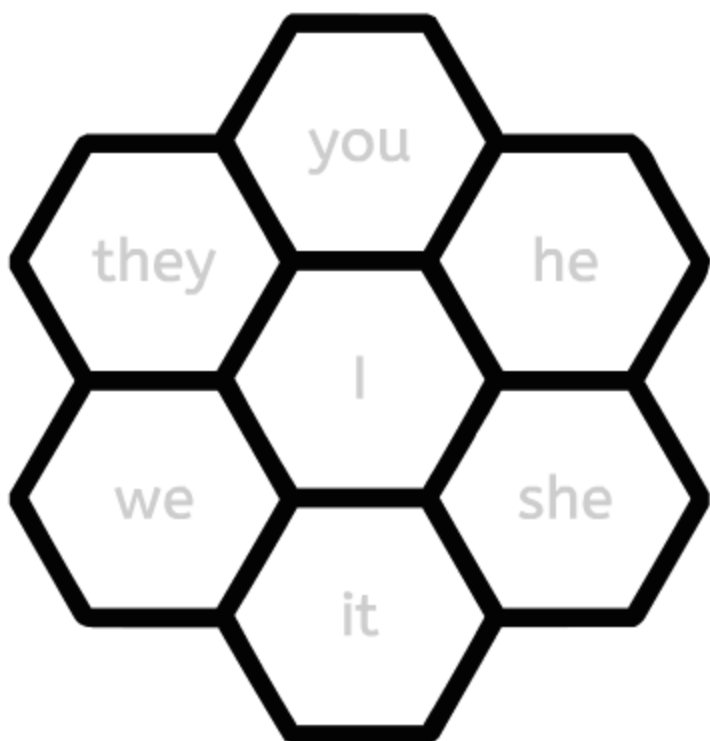
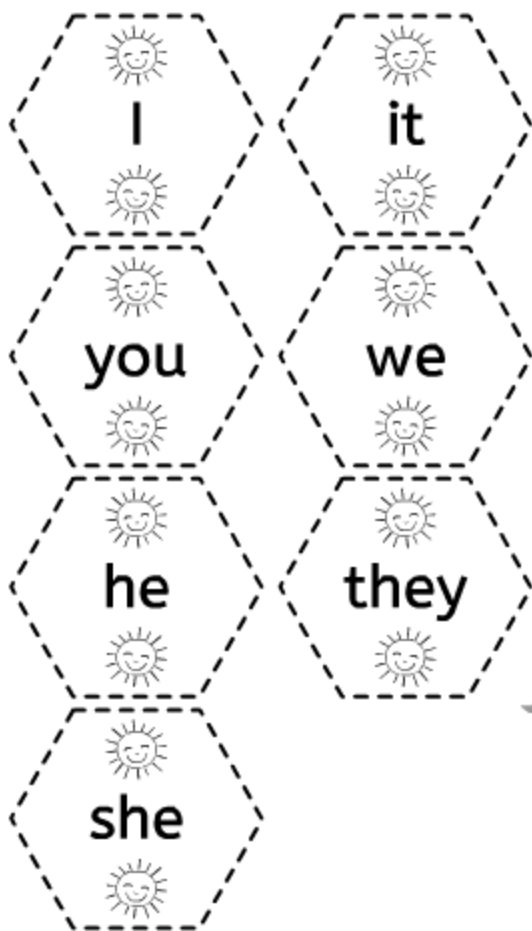


Cut and put the subject pronoun tiles into the correct honeycomb cells.



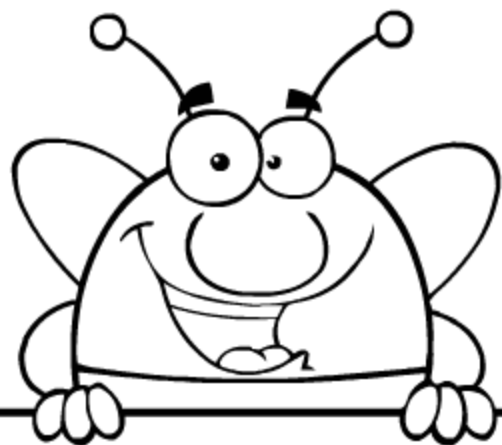
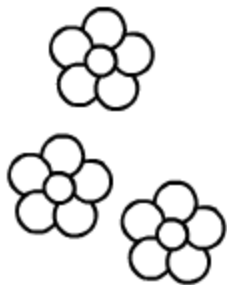
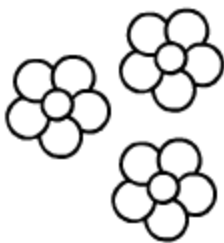
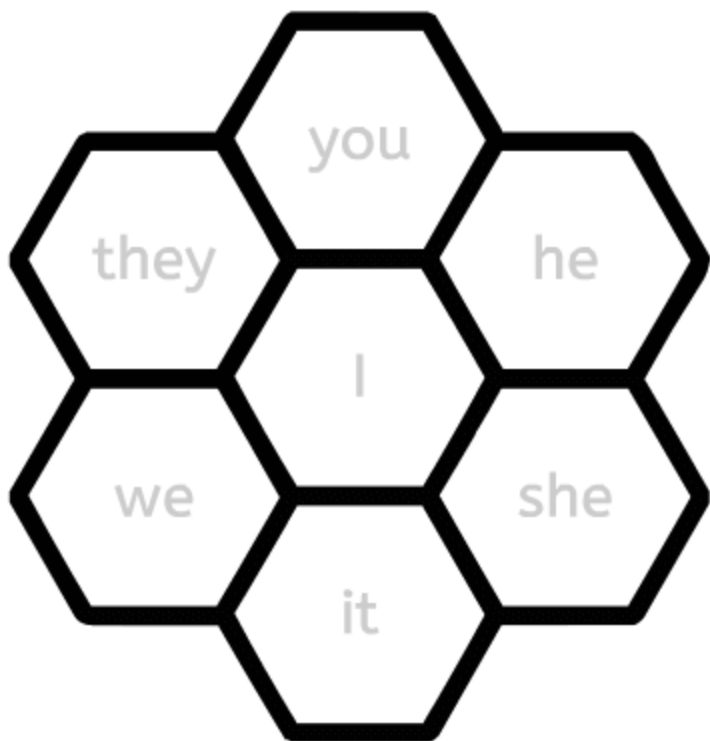
Subject pronouns take the place of nouns that are the subject of the sentence.



Cut out the individual tiles along dashed lines.

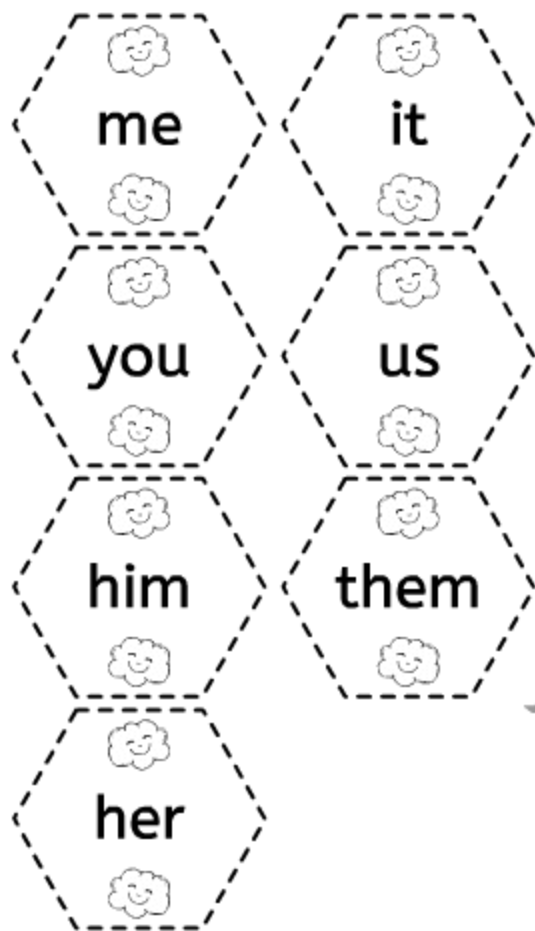


Cut and put the object pronoun tiles into the correct honeycomb cells.



Object pronouns take the place of nouns. They are used as the object of the verb in a sentence.

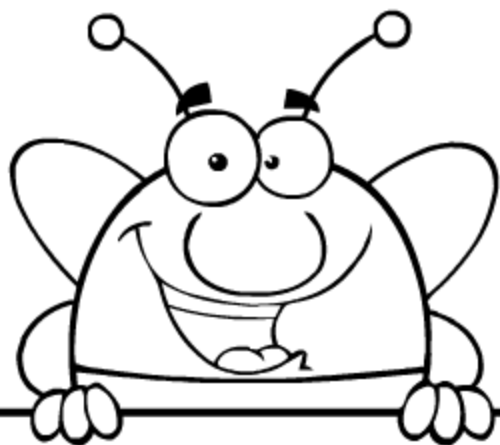
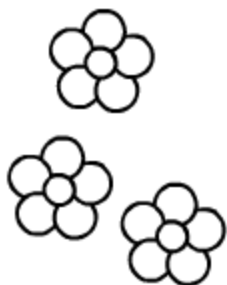
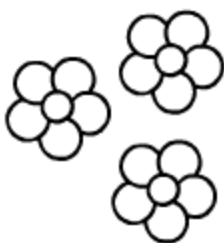
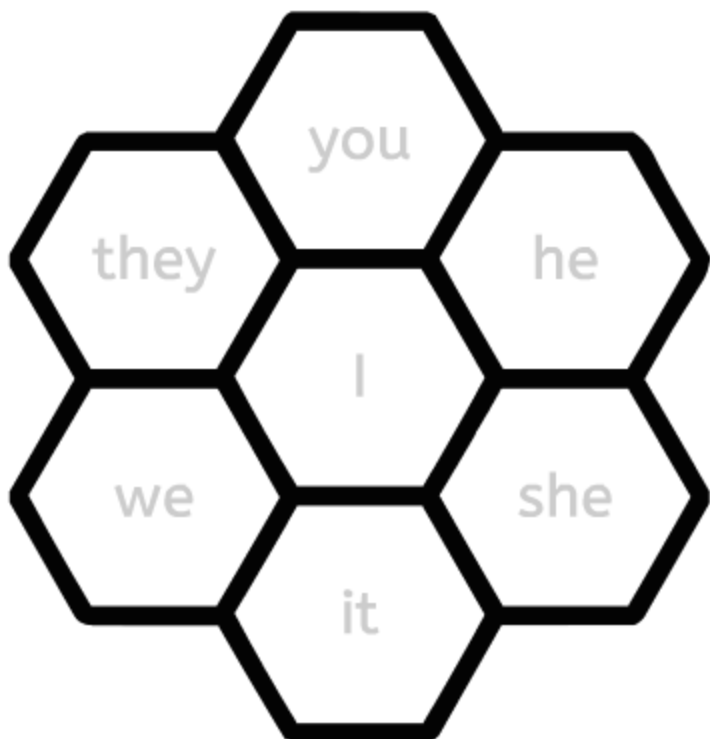
The object of a sentence is the person, place, animal or thing that receives the action shown by the verb.



Cut out the individual tiles along dashed lines.

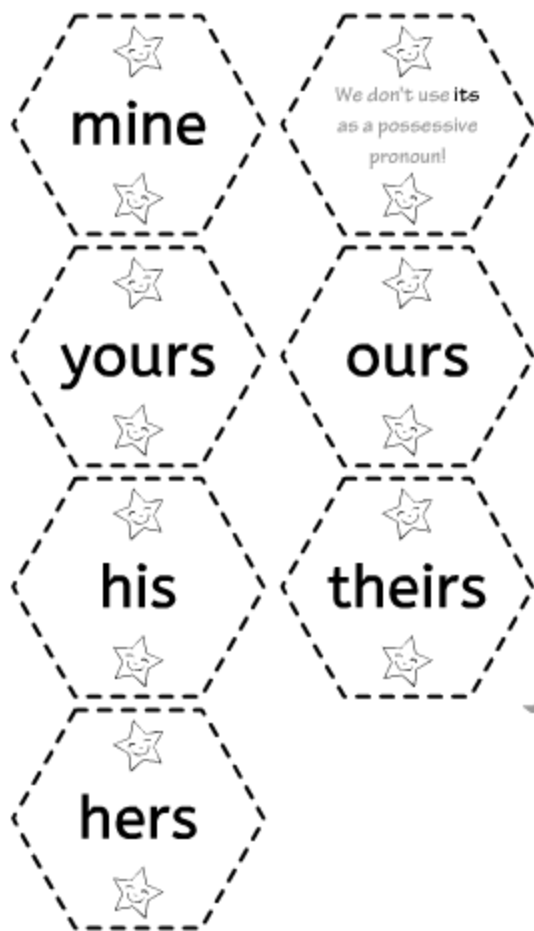


Cut and put the possessive pronoun tiles into the correct honeycomb cells.



Possessive pronouns are used to talk about things that belong to people.

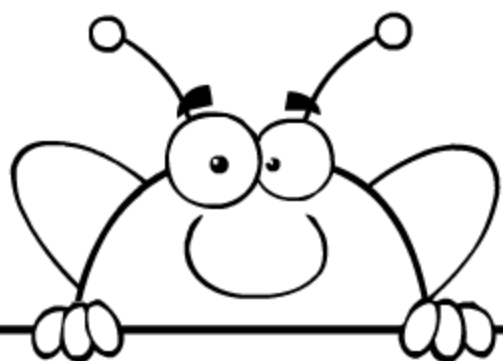
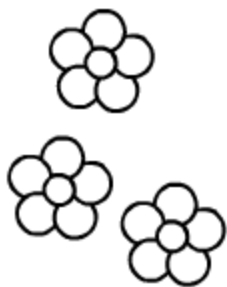
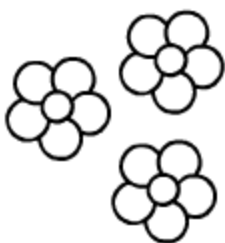
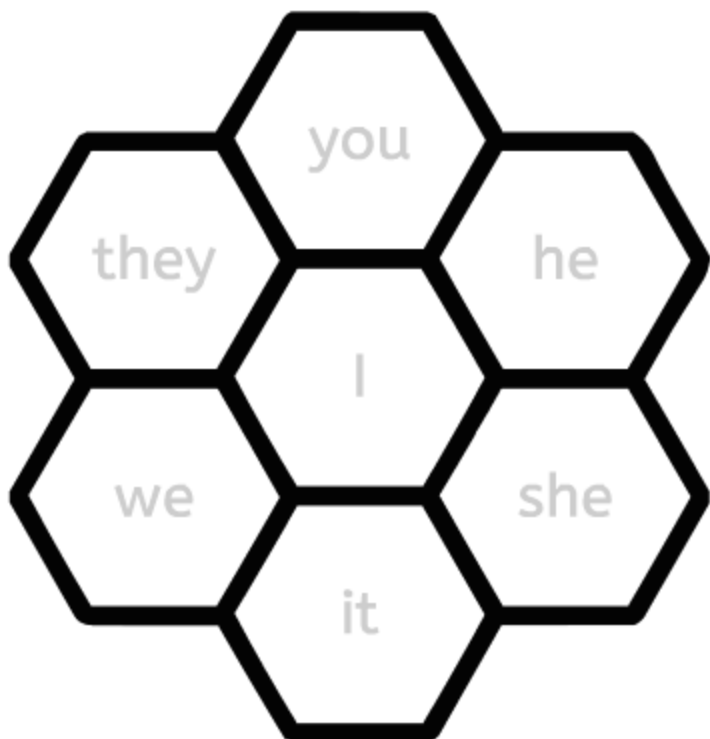
We can use a possessive pronoun instead of a full noun phrase to avoid repeating words.



Cut out the individual tiles along dashed lines.

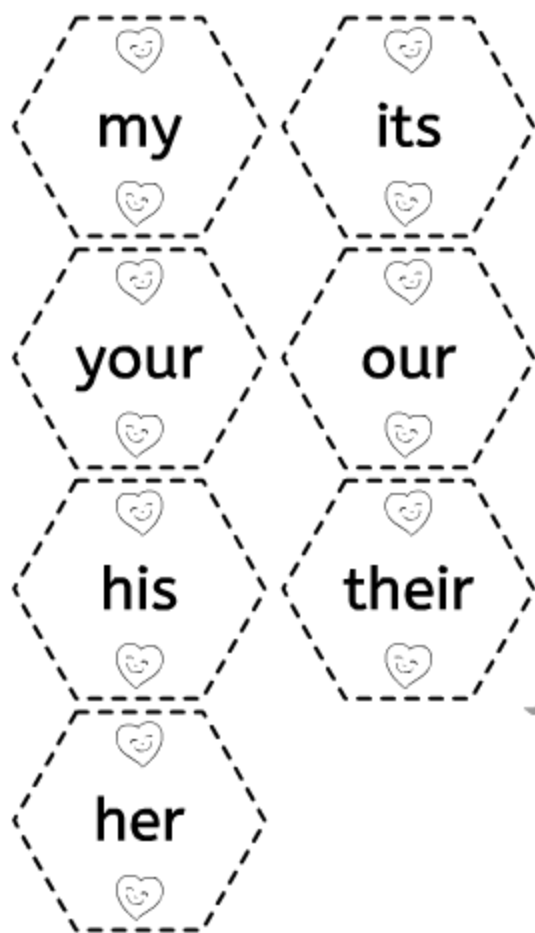


Cut and put the possessive adjective tiles into the correct honeycomb cells.



A possessive adjective is used to show ownership. It comes before a noun in the sentence.

Remember, possessive pronouns are used to replace the noun. Possessive adjectives are used to describe the noun.



Cut out the individual tiles along dashed lines.



Cut the pronoun boxes, mix them, and put into the correct categories.

Subject
Pronouns

Object
Pronouns

Possessive
Pronouns

Possessive
Adjectives



I



me



mine



my



you



you



yours



your



he



him



his



his



she



her



hers



her



it



it



its



we



us



ours



our



they



them



theirs



their



Cut out the individual boxes along dashed lines.

